

NetFLOW IP

Redefining the DNA of Security

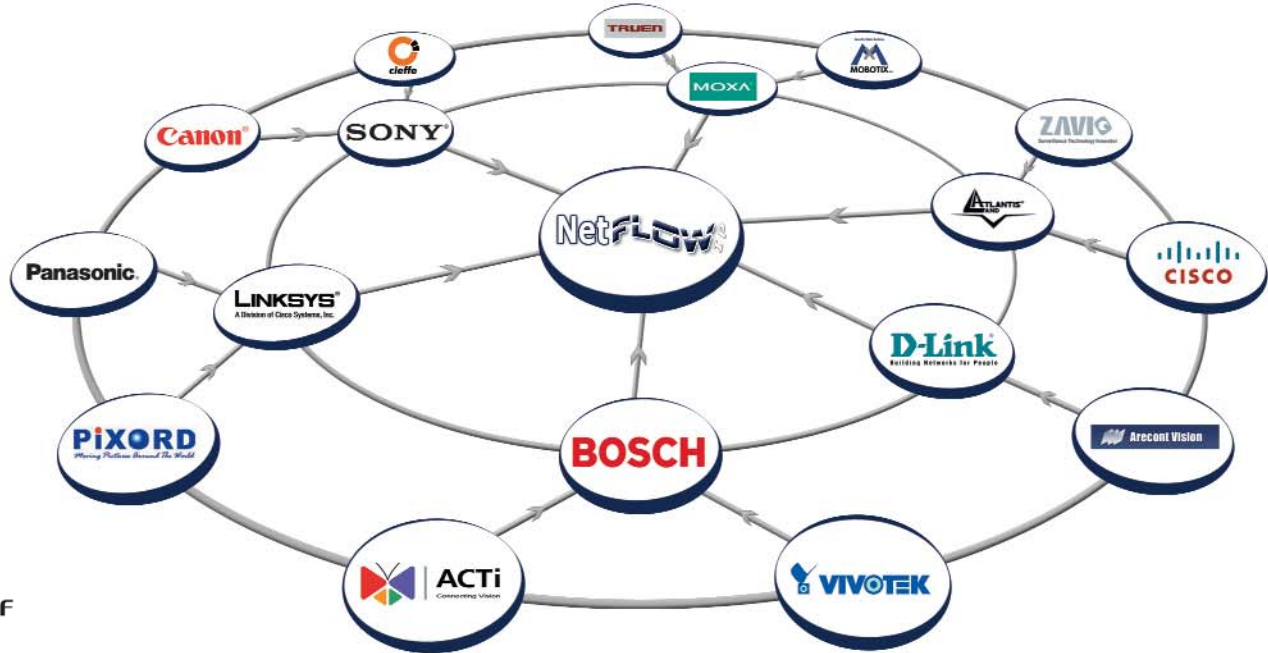
Netflow open platform software brings flexible and scalable video data management to suit enterprise level deployment with added benefits of built-in analytics (IVS) and optional integration with Access control, POS and Meta data applications



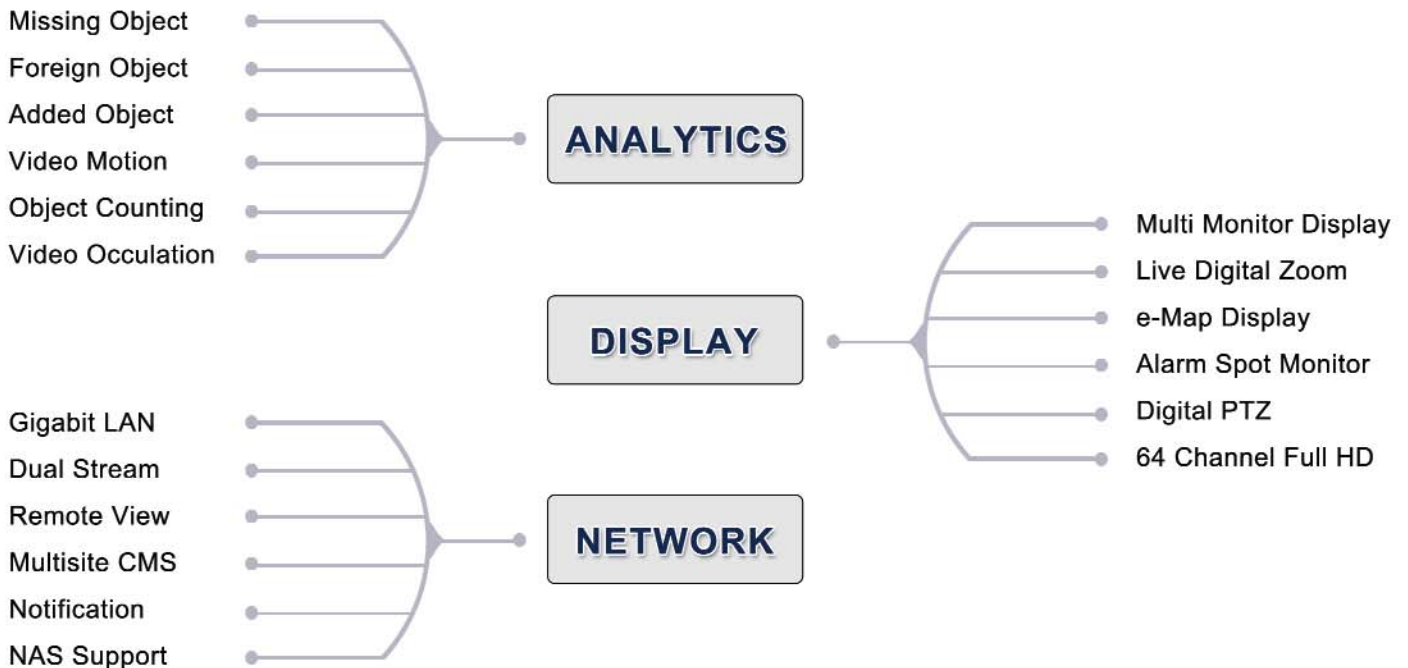
HD Ready



NetflowIP brings global brands under one software platform



Supports more than 70 Global Brands Over 1750 Models of Cameras



Built-in Video Analytics

The all new built-in analytics function protect your assets with 6 different video events, 14 different POS events, digital input and 4 events.

Advanced Intelligent Video Surveillance with 4 types of counting filter and 8 types of video surveillance analytics provide comprehensive / super detection performance and easy installation.



Missing object



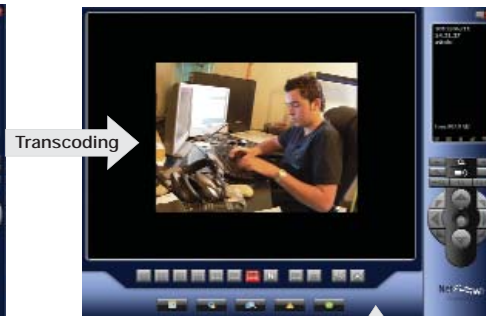
Foreign object

Local Recording



1080P Full HD 5300 KBps

Remote Viewing



CIF High Speed 100 KBps

Multi Stream Video - Transcoding

The new effective multi-stream video transcoding helps you to record & stream with different resolution and frame rate. You can transcode high bandwidth video streams into a much lower bandwidth stream for remote viewing. You can experience every pixel regardless of IP, Megapixel or HD-SDI cameras.

Mode	Resolution	Frame Rate	Bandwidth*
Recording	1920 x 1080	30 FPS	5300 KBps
Remote Monitoring (After transcode)	320 x 240	320 x 240	320 x 240

*Actual bandwidth varies by scene complexity.

Data Management Auto Load Balance / Back-up

Effective data management & Auto Load Balance increase the data Recording & Retrieving efficiency to optimize HDD recording performance. The recorded data can be backed up automatically to external storages, including DAS, SAN, iSCSI, at pre-defined schedules.



Product highlight of the open platform NetflowIP

Supports up to 64* channels	Unique GUI recording schedule
Supports H.264 compression format	Smart detection of 6 events with 10 instant responses
Triple Monitor Display	Remote playback, backup, I/O control and desktop configuration
Auto backup	Up to 128**CH remote live view
Automatic Camera Model Detection	Supports transcode and multiple stream profiles
Instant Playback & E-map	Supports digital watermark
On the edge motion integration	Intelligent playback system with 5 video analytics searches
Network Flow Monitor	Supported by NetflowIP Central Management System
POS, I/O, LPR & Access Control Integration	Supports Android, iPhone, & iPad viewing
Privacy Mask Zone & User Admin Management	Supports 70 brands & over 1750 models of cameras
Auto Boost Recording & Disk Load Balance	Built-in analytics (Software watchdog)
Two-way audio	Failover Recording Server*
Advanced Intelligent Video Analytics with multiple searching modes	Supports 30 languages

Robust Hardware from WatchNET

High Performance *eXtreme* NVR Server & Storage Devices

- ✓ eXtreme Performance NVR & Storage System
- ✓ Scalable TRIBRID recording solution
- ✓ Dual Gigabit ports for effective bandwidth management
- ✓ Dual redundant drives with professional OS preconfigured
- ✓ Massive 20 swapable HDD bays for most demanding long term storage for HD video recording
- ✓ Supports up to 4 monitors at full 1080P resolution
- ✓ Support real time (30FPS) image recording & streaming
- ✓ Standard RAID 5 Drive configuration (Optional RAID 6)
- ✓ Extreme processing power and memory makes the server robust for high data transfer video recording
- ✓ Intel P67 Based Military-grade Motherboard and Thermal Armor for most demanding video security needs with most stability in mind
- ✓ TUF Engine Power Design: TUF Components



I and X Series pre-built servers



NDVR-IS-658 / NDVR-IS-678



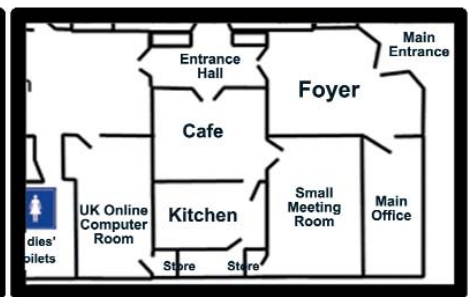
ESR-I20-S / ESR-I20-R / ESR-X20-S / ESR-X20-R



HD CMS 128 Channels



Virtual Matrix



E-Map

*All logos and trade marks represent the registered users only. All rights reserved.
All product specifications on this brochure are subject to change without notice.*

** Additional software and application costs apply; contact your local supplier for detailed specifications and pricing.*

CANADA:
351 Ferrier Street, Unit 5
Markham, ON L3R 5Z2
Toll Free: 1-866-843-6865
Tel: 416-410-6865
Fax: 1-866-331-3341

USA:
700 Ensminger Rd. Suite 104
Tonawanda, NY 14150 USA
Toll Free: 1-866-843-6865
Local: 1-716-877-7277
Fax: 1-866-331-3341

info@watchnetinc.com
www.watchnetinc.com

INDIA:
C-48, DDA Shed, Ground Floor
Okhla Industrial Area, Phase I
New Delhi-110020
Toll: +91 11 26816005
Fax: +91 11 26816006

UAE:
P O Box No 126312
Dubai, UAE
Tel: + 971 4 3584458
Fax: + 971 4 3584458
Mobile : + 971 50 5869290